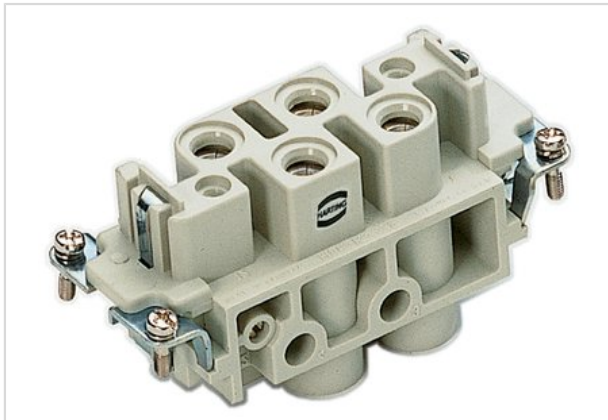


Han K 4/2 Pin Female Insert



Part number	09 38 006 2701
Specification	Han K 4/2 Pin Female Insert
HARTING eCatalogue	https://b2b.harting.com/09380062701

Identification

Category	Inserts
Series	Han-Com®
Identification	Han® K 4/2

Version

Termination method	Screw termination
Gender	Female
Size	16 B
Number of contacts	4
Additional contacts	+ 2 additional signal contacts
PE contact	Yes

Technical characteristics

Conductor cross-section	1.5 ... 16 mm ² 0.5 ... 2.5 mm ² Signal
Electrical data acc. to IEC 61984	80 A 830 V 8 kV 3
Rated current	80 A
Rated voltage	830 V
Rated impulse voltage	8 kV
Pollution degree	3
Electrical data, signal	16 A 400 V 6 kV 3
Rated current (signal)	16 A
Rated voltage (signal)	400 V
Rated impulse voltage (signal)	6 kV
Pollution degree (signal)	3
Rated current acc. to UL	80 A
Rated voltage acc. to UL	600 V
Rated current acc. to UL (signal)	16 A
Rated voltage acc. to UL (signal)	600 V



Pushing Performance

Technical characteristics

Rated current acc. to CSA	80 A
Rated voltage acc. to CSA	300 V
Rated current acc. to CSA (signal)	16 A
Rated voltage acc. to CSA (signal)	300 V
Insulation resistance	$\geq 10^{10} \Omega$
Contact resistance	$\leq 0.3 \text{ m}\Omega$
Contact resistance, signal area	$\leq 1 \text{ m}\Omega$
Limiting temperature	-40 ... +125 °C
Stripping length	14 mm 7.5 mm Signal
Tightening torque	1.2 Nm @ 1.5 mm ²
	2 Nm @ 2.5 mm ²
	3 Nm @ 4 mm ²
	3 Nm @ 6 mm ²
	3 Nm @ 10 mm ²
	3 Nm @ 16 mm ²
0.5 Nm Signal	
Mating cycles	≥ 500

Material properties

Material (insert)	Polycarbonate
Colour (insert)	RAL 7032 (pebble grey)
Material (contacts)	Copper alloy
Surface (contacts)	Silver plated
Material flammability class acc. to UL 94	V-0
RoHS	compliant with exemption
RoHS exemptions	6a: Lead as an alloying element in steel for machining purposes and in galvanised steel containing up to 0,35 % lead by weight
	6c: Copper alloy containing up to 4 % lead by weight
ELV status	compliant with exemption
China RoHS	50
REACH Annex XVII substances	No
REACH ANNEX XIV substances	No
REACH SVHC substances	Yes
REACH SVHC substances	Lead



Pushing Performance

Specifications and approvals

Specifications	EN 60664-1 IEC 61984
Approvals	DNV GL
UL / CSA	UL 1977 ECBT2.E235076 CSA-C22.2 No. 182.3 ECBT8.E235076

Commercial data

Packaging size	1
Net weight	118.4 g
Country of origin	Romania
Customs tariff number	85366990