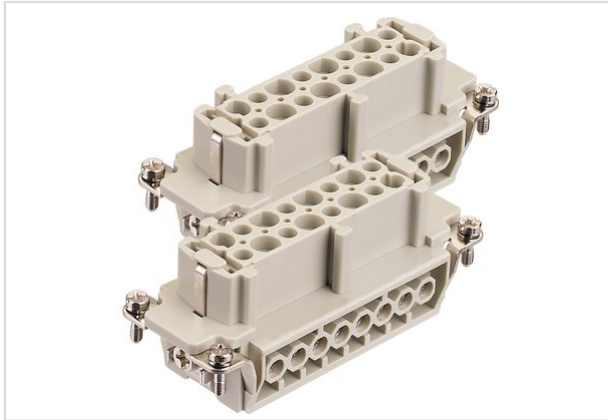


## Han 16E F insert screw (17-32)



|                    |                                                                                       |
|--------------------|---------------------------------------------------------------------------------------|
| Part number        | 09 33 016 2711                                                                        |
| Specification      | Han 16E F insert screw (17-32)                                                        |
| HARTING eCatalogue | <a href="https://b2b.harting.com/09330162711">https://b2b.harting.com/09330162711</a> |

### Identification

|               |                    |
|---------------|--------------------|
| Category      | Inserts            |
| Series        | Han E <sup>®</sup> |
| Specification | Continuing marking |

### Version

|                        |                                               |
|------------------------|-----------------------------------------------|
| Termination method     | Screw termination                             |
| Gender                 | Female                                        |
| Size                   | 32 B                                          |
| With wire protection   | Yes                                           |
| Number of contacts     | 32                                            |
| PE contact             | Yes                                           |
| Contact identification | 17 ... 32                                     |
| Details                | You need two inserts for a complete assembly! |

### Technical characteristics

|                                   |                              |
|-----------------------------------|------------------------------|
| Conductor cross-section           | 0.75 ... 2.5 mm <sup>2</sup> |
| Conductor cross-section           | AWG 18 ... AWG 14            |
| Electrical data acc. to IEC 61984 | 16 A 500 V 6 kV 3            |
| Rated current                     | 16 A                         |
| Rated voltage                     | 500 V                        |
| Rated impulse voltage             | 6 kV                         |
| Pollution degree                  | 3                            |
| Rated voltage acc. to UL          | 600 V                        |
| Rated voltage acc. to CSA         | 600 V                        |
| Insulation resistance             | ≥10 <sup>10</sup> Ω          |
| Contact resistance                | ≤1 mΩ                        |
| Limiting temperature              | -40 ... +125 °C              |
| Stripping length                  | 7.5 mm                       |
| Tightening torque                 | 0.5 Nm                       |



Pushing Performance

## Technical characteristics

|               |      |
|---------------|------|
| Mating cycles | ≥500 |
|---------------|------|

## Material properties

|                             |                                                      |
|-----------------------------|------------------------------------------------------|
| Material (insert)           | Polycarbonate                                        |
| Colour (insert)             | RAL 7032 (pebble grey)                               |
| Material (contacts)         | Copper alloy                                         |
| Surface (contacts)          | Silver plated                                        |
| RoHS                        | compliant with exemption                             |
| RoHS exemptions             | 6c: Copper alloy containing up to 4 % lead by weight |
| ELV status                  | compliant with exemption                             |
| China RoHS                  | 50                                                   |
| REACH Annex XVII substances | No                                                   |
| REACH ANNEX XIV substances  | No                                                   |
| REACH SVHC substances       | Yes                                                  |
| REACH SVHC substances       | Lead                                                 |

## Specifications and approvals

|                |                                                                                     |
|----------------|-------------------------------------------------------------------------------------|
| Specifications | EN 60664-1<br>IEC 61984                                                             |
| Approvals      | DNV GL                                                                              |
| UL / CSA       | UL 1977 ECBT2.E235076<br>UL 2237 PVVA2.E318390<br>CSA-C22.2 No. 182.3 PVVA8.E318390 |

## Commercial data

|                       |          |
|-----------------------|----------|
| Packaging size        | 1        |
| Net weight            | 91.5 g   |
| Country of origin     | Germany  |
| Customs tariff number | 85366990 |