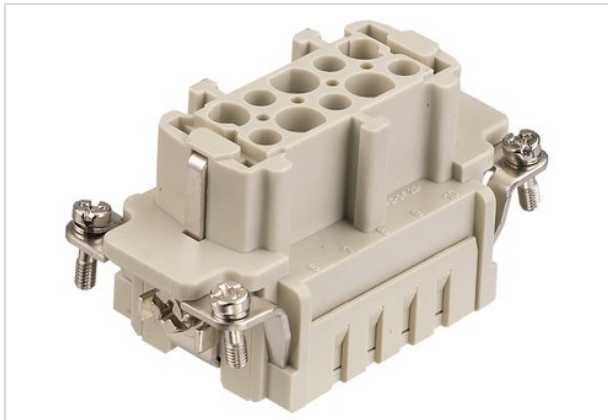


## Han 10E insert female crimp



Part number	09 33 010 2702
Specification	Han 10E insert female crimp
HARTING eCatalogue	<a href="https://b2b.harting.com/09330102702">https://b2b.harting.com/09330102702</a>

### Identification

Category	Inserts
Series	Han E <sup>®</sup>

### Version

Termination method	Crimp termination
Gender	Female
Size	10 B
Number of contacts	10
PE contact	Yes
Details	Please order crimp contacts separately.

### Technical characteristics

Conductor cross-section	0.14 ... 4 mm <sup>2</sup>
Conductor cross-section	AWG 26 ... AWG 12
Electrical data acc. to IEC 61984	16 A 500 V 6 kV 3
Rated current	16 A
Rated voltage	500 V
Rated impulse voltage	6 kV
Pollution degree	3
Rated voltage acc. to UL	600 V
Rated voltage acc. to CSA	600 V
Insulation resistance	≥10 <sup>10</sup> Ω
Limiting temperature	-40 ... +125 °C
Mating cycles	≥500

### Material properties

Material (insert)	Polycarbonate
Colour (insert)	RAL 7032 (pebble grey)



Pushing Performance

## Material properties

RoHS	compliant
ELV status	compliant
China RoHS	e
REACH Annex XVII substances	No
REACH ANNEX XIV substances	No
REACH SVHC substances	No

## Specifications and approvals

Specifications	EN 60664-1
	IEC 61984
Approvals	DNV GL
UL / CSA	UL 1977 ECBT2.E235076
	UL 2237 PVVA2.E318390
	CSA-C22.2 No. 182.3 PVVA8.E318390

## Commercial data

Packaging size	1
Net weight	47.62 g
Country of origin	Germany
Customs tariff number	85366990