

# P | Cabling

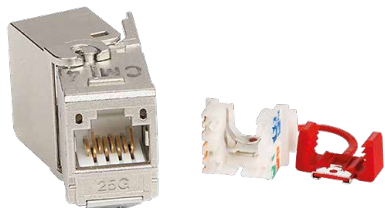
## 25Gmodul / 25Gmodul K

AWG 26/1 - 22/1, AWG 26/7 - 22/7

- de** Montagehinweis für den Installateur
- en** Mounting note for the installer
- fr** Notice d'installation pour l'installateur

### Modul

130B11-25-E 180°



**de**



**en**

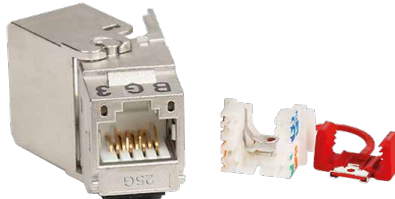


**fr**



### Keystone

130B21-25-E 180°



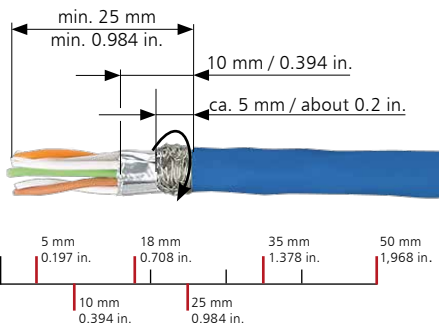
**de**



**en**



**fr**



### **i** HINWEIS / NOTE / NOTICE

- de** **Kabel AWG 26!**  
Schirmgeflecht 5 mm über den Kabelmantel aufbringen.
- en** **Cable AWG 26!**  
Wrap the braided shield 5 mm over the cable sheath.
- fr** **Câble AWG 26 !**  
Enrouler le blindage tressé 5 mm autour du gainage.

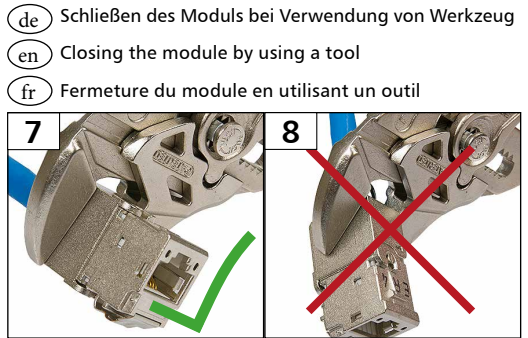
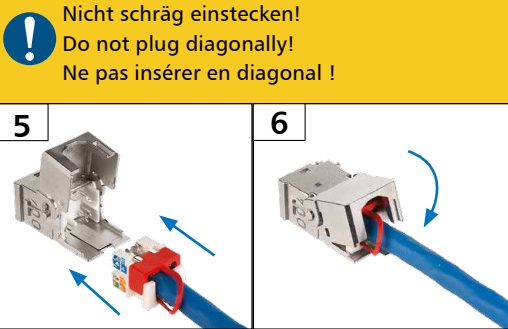
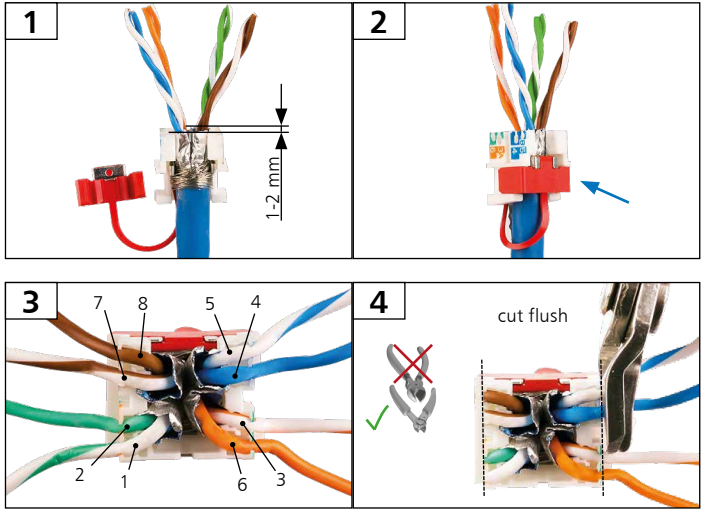
- de** Öffnen des Moduls
- en** Open the module
- fr** Ouvrir le module



- de Kabelmontage T568A
- en Cable termination T568A
- fr Installation d'un câble T568A

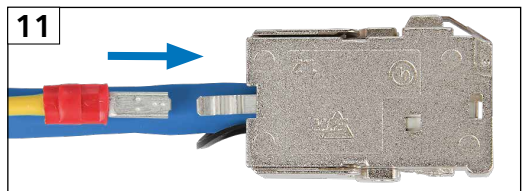
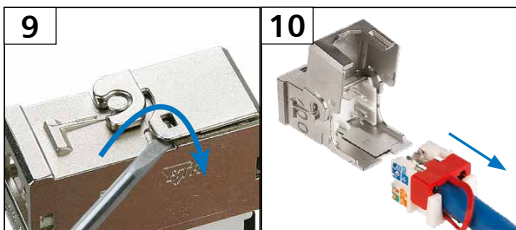
Anschlussbelegung  
PIN assignments  
Affectation des fils  
aux contacts

PIN Nr. No. contact no.	T568A	T568B
1	WH-GN	WH-OG
2	GN	OG
3	WH-OG	WH-GN
4	BU	BU
5	WH-BU	WH-BU
6	OG	GN
7	WH-BN	WH-BN
8	BN	BN



- de Demontage
- en Disassembly
- fr Démontage

- de Potentialausgleich
- en Potential equalisation
- fr Compensation de potentiel



Optionaler Potentialausgleich mit 2,8 mm Flachstecker  
Optional potential equalisation with 2.8 mm flat plug  
Compensation de potentiel optionnelle par languette à 2,8 mm